



# The Yale LET(s)Lead Transformational Leadership Academy

INFORMATIONAL SESSION

JUNE 2026

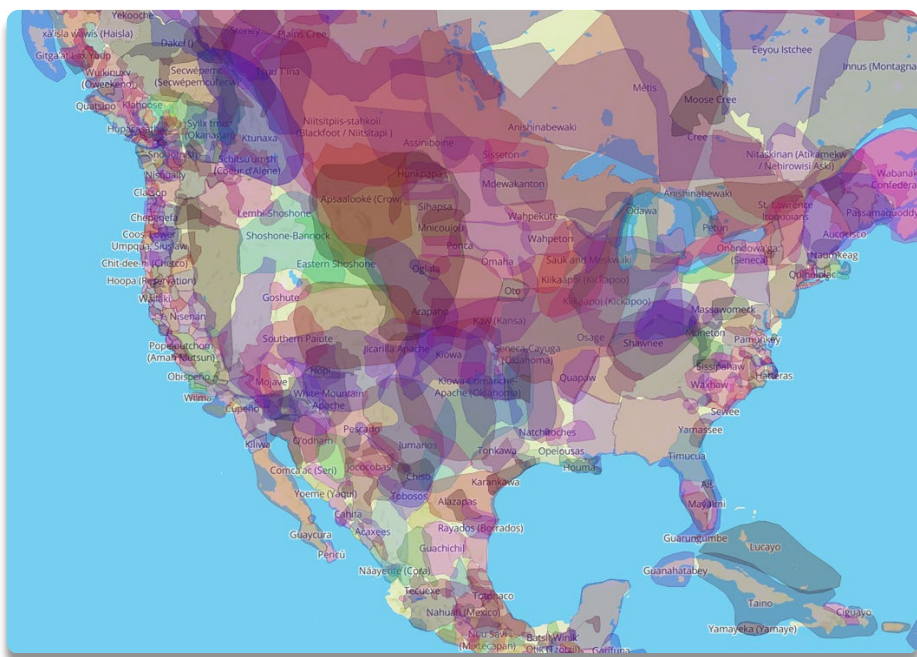
yale  
program  
for  
recovery  
and  
community  
health



# Yale LET(s) Lead Academy Team

- Chyrell D. Bellamy, PhD, MSW
- Maria E. Restrepo-Toro, MS
- Heather E. McDonald Bellamy, MEd
- Megan Evans, PhD
- Snigdha Talluri, PhD
- Jordana Rovet, MSW, RSW
- Andrew Johnson, BA

# Land Acknowledgement



We are from Connecticut and Massachusetts - We honor the Indigenous caretakers of those lands and waters, the elders who lived here before, the Indigenous today, and the generations to come.

It is our duty to acknowledge that many of the institutions where we work or conduct research are indeed on Native land and buildings that were built by people enslaved. Thus, it is important that we

**GIVE THANKS!**

Land acknowledgments do not exist in the past tense or historical context. Colonialism is a current ongoing process, and we should continue to be mindful of our present participation.

# Agenda

- ▶ Welcome, Team Introductions
- ▶ History of LET(s)Lead Academy
- ▶ Why the need for lived experience leadership development in Canada?
- ▶ Program Goals and Teaching Philosophy
- ▶ Curriculum Overview & Mentorship
- ▶ Application process
- ▶ Q & A Session

**Why lived experience?  
Why leadership?  
Why now?**



## How did LET(s)Lead start?

- Ten years ago, people with lived experience from around the globe met through Yale's Program for Recovery and Community Health and the International Initiative for Mental Health Leadership.
- Involvement: United States, Canada, Netherlands, Scotland, Ireland, New Zealand, England, Australia
- Discussed need to develop leaders: lack of opportunities for leadership roles, leadership experience, mentorship.
- International survey and interviews showed need for leadership development.
- Initial funding from SAMHSA for pilot curriculum.



*Initial folks involved... Chyrell Bellamy (USA) , Wilma Boevink (Netherlands), Larry Davidson (USA), Susan L. Hardie (Canada), Gordon Johnson (Scotland), Chacku Mathai (USA), Paddy McGowan (Ireland), Mary O'Hagan (New Zealand), Julie Repper (England), Anthony Stratford (Australia), Eduardo Vega (USA), Emma Watson (England).*

# LET(s)Lead

Lived Experience Transformational Leadership Academy



-  Cohort 1: August 2017–April 2018  
National U.S. Cohort in partnership with SAMHSA and IIMHL
-  Cohort 2: August 2018–April 2019  
Toronto Cohort in partnership with the Centre for Addiction and Mental Health (CAMH)
-  Cohort 3: April 2019–December 2019  
New Zealand Cohort in partnership with Careerforce NZ
-  Cohort 4: August 2020–April 2021  
New England Cohort in partnership with the New England MHTTC
-  Cohort 5: September 2021–April 2022  
Toronto Cohort II in partnership with CAMH
-  Cohort 6: February 2022–October 2022 in partnership with NMHCCF) and MHLEEN in Australia
-  Cohort 7: September 2022–May 2023 Canadian Cohort, in partnership with the Centre for Addiction and Mental Health (CAMH)
-  Cohort 8: February 2023 - September 2023 in partnership with NMHCC and MHLEEN in Australia
-  Cohort 9: August 2023- May 2024  
Toronto Cohort III in partnership with CAMH
-  Cohort 10: January 2024–September 2024  
US Latine Cohort partnership with Latino Behavioral Health Center of Excellence at Universidad Central del Caribe

-  Cohort11: September 2024 - May 2025  
Toronto Cohort IV in partnership with CAMH
-  Cohort12: January 2025- September 2025  
Iceland Cohort , in partnership with University of Iceland and Traustur Kjarni
-  Cohort 13: September 2025– May 2026  
Toronto Cohort in partnership with the Centre for Addiction and Mental Health (CAMH)
-  Cohort 14: January 2026- September 2026  
Connecticut Cohort training co-sponsored by Yale and CT DMHAS
-  Cohort 15: September 2026 –May 2027  
Toronto Cohort in partnership with the Centre for Addiction and Mental Health (CAMH)





**Learn and practice transformational leadership.**

**Understand critical issues in mental health and other systems.**


**Develop a project focused on systems or social change.**

# Goals of the Yale LET(s)Lead Academy




# TEACHING PHILOSOPHY


Inclusive pedagogical models allow people to understand, obtain, and co-create knowledge in the classroom.



Promote faculty-fellow interaction.




Share power.



Create collaborative learning environments.



Active Voice



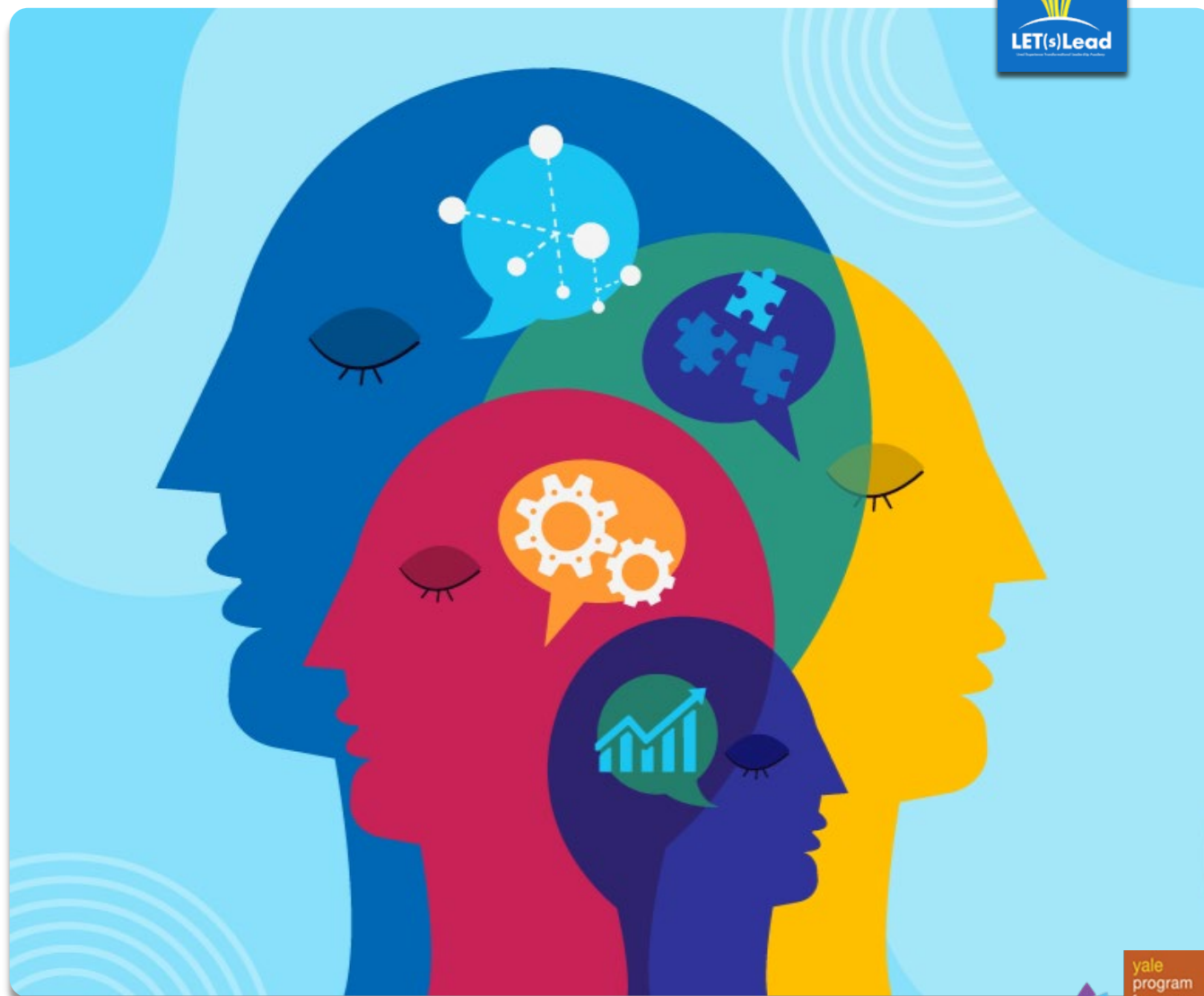
Use lived/learned expertise.

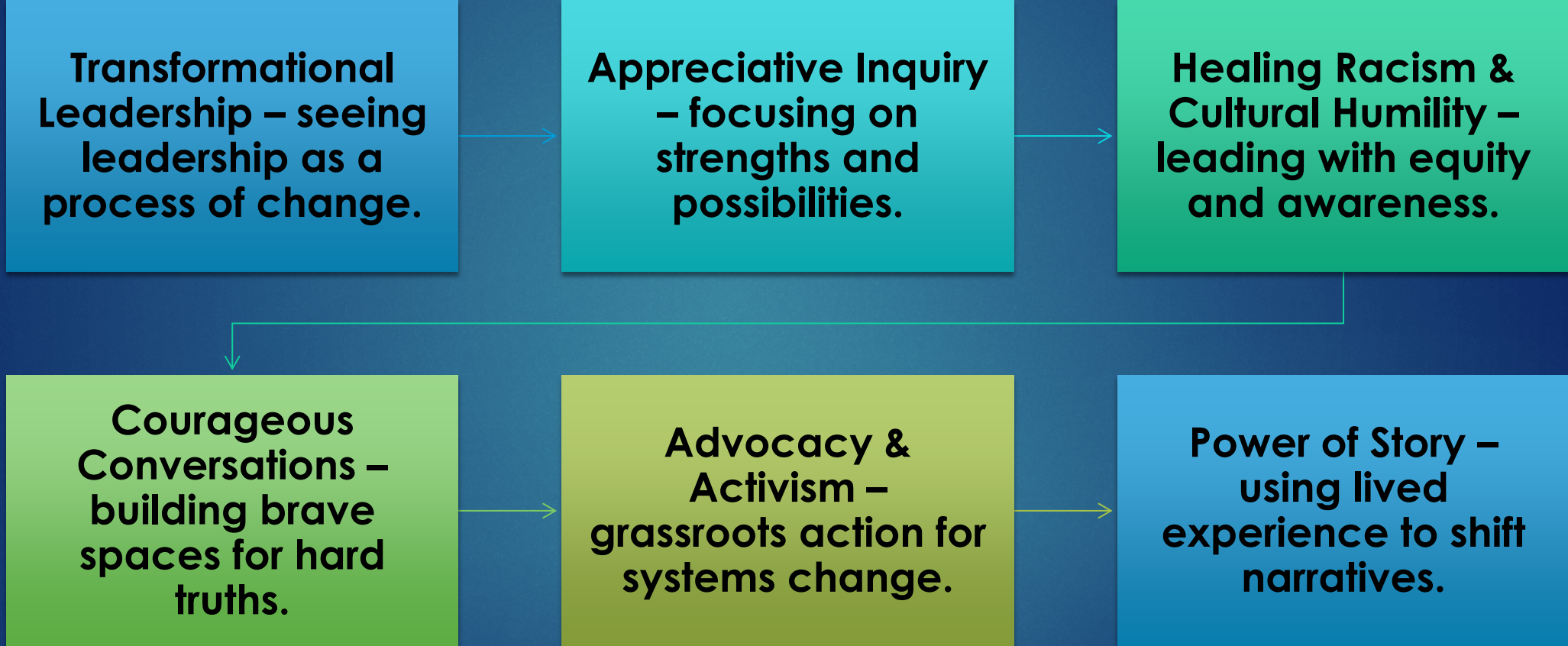


Take an appreciative stance.

## Yale LET(s) Lead Academy Structure

- ▶ Experience a 9-month program including:
  - ▶ 11 Weekly virtual classes
  - ▶ Monthly mentoring & class meetings
  - ▶ Final project development and presentation





# Project Development

Start with a passion driven idea. A fully developed plan is not required. We encourage the idea to be rooted in lived experience and a drive to create change.

- ▶ Projects can start broad and evolve over time
- ▶ Ideas often shift through learning, reflection, and mentoring
- ▶ You may apply with a new idea, build on something you've done before, or develop a brand-new idea.

**We accept people, not projects. -Jordana Rovet**

# Mentorship

Starting in **January**, you'll be matched with a mentor for 1-on-1 mentorship.

Your mentor will:

- ▶ Help refine your idea into a clear, purposeful project
- ▶ Offer regular guidance, encouragement, and accountability
- ▶ Support you through challenges and growth
- ▶ This mentor can be selected by faculty or by you.



# Past Project EXAMPLES

Mental Health + Stigma  
Awareness Campaigns

Creating/Expanding Peer  
Bridger Programs

Justice System + Mental  
Health/ Substance Use  
Peer Support

Veterans, Peer, + Mobile  
Crisis Programming

Storytelling to Raise the  
Lived Experience Voice

Working on Culturally  
Responsive Peer  
Programming for Specific  
Populations

Developing Curricula to  
Further Innovative Ideas  
in Peer Support

Creating Art Projects that  
Illuminate Injustices in  
Mental Health/ Substance  
Use Systems

Affecting Policy,  
Practice, and  
Procedures at  
Organizations and  
Government Agencies

Yale Lived Experience Transformational Leadership 2025

# Final Presentation

You'll share the journey of your evolving idea.

- ▶ No project is ever fully finished! The goal is to articulate what you are thinking and to begin shaping your idea with support from the LET(s)Lead community.
- ▶ Project ideas can be diverse: events, podcasts, advocacy campaigns, resource guides, trainings, book projects; systems change initiatives, and more.
- ▶ As we get closer to the monthly session, we will provide a **LET(s)Lead Project Planning Template** to help guide your preparation.

# Timeline and Important Dates



Applications due July 6, 2026 at midnight!



Interviews July 2026



Notification of selected fellows August 2026



Weekly sessions begin September 17 and continue through December 10, 2026



Monthly sessions January – April 2027



Graduation in May 2027

# How to Apply



Visit <https://clc.camh.ca/mod/page/view.php?id=1630> to download an application form



Email completed application to [megan.evans@yale.edu](mailto:megan.evans@yale.edu) by midnight on July 6<sup>th</sup>



Please reach out to us with any questions or technical issues and we will get back to you.



Q&A



**Chyrell D. Bellamy, PhD, MSW:**  
Yale Professor & Director of LET(s)Lead  
[chyrell.bellamy@yale.edu](mailto:chyrell.bellamy@yale.edu)

**Maria Restrepo-Toro, MS, BSN:**  
Co-Director of LET(s)Lead  
[maria.restrepo-toro@yale.edu](mailto:maria.restrepo-toro@yale.edu)

**Heather McDonald Bellamy, MEd**  
Program Consultant  
[heather.mcdonaldbellamy@yale.edu](mailto:heather.mcdonaldbellamy@yale.edu)

**Megan Evans, PhD, MS:**  
Program Evaluator/Coordinator  
[megan.evans@yale.edu](mailto:megan.evans@yale.edu)

**Snigdha Talluri, PhD, MS:**  
Program Coordinator  
[saisnigdha.talluri@yale.edu](mailto:saisnigdha.talluri@yale.edu)

**Jordana Rovet: MSW, RSW:**  
CAMH Faculty  
[Jordana.rovet@camh.ca](mailto:Jordana.rovet@camh.ca)

**Andrew Johnson, BA:**  
CAMH Faculty  
[Andrew.johnson@camh.ca](mailto:Andrew.johnson@camh.ca)

This is just a small window into the power of lived experience leadership. Thank you for joining the conversation. We hope you will stay connected!



**Follow Us on Social Media**

Let's Get Connected for Our Latest News & Updates

on LinkedIn @Yale LET(s)Lead

on Facebook @LETsLead

For more information check out our website and follow us on social media